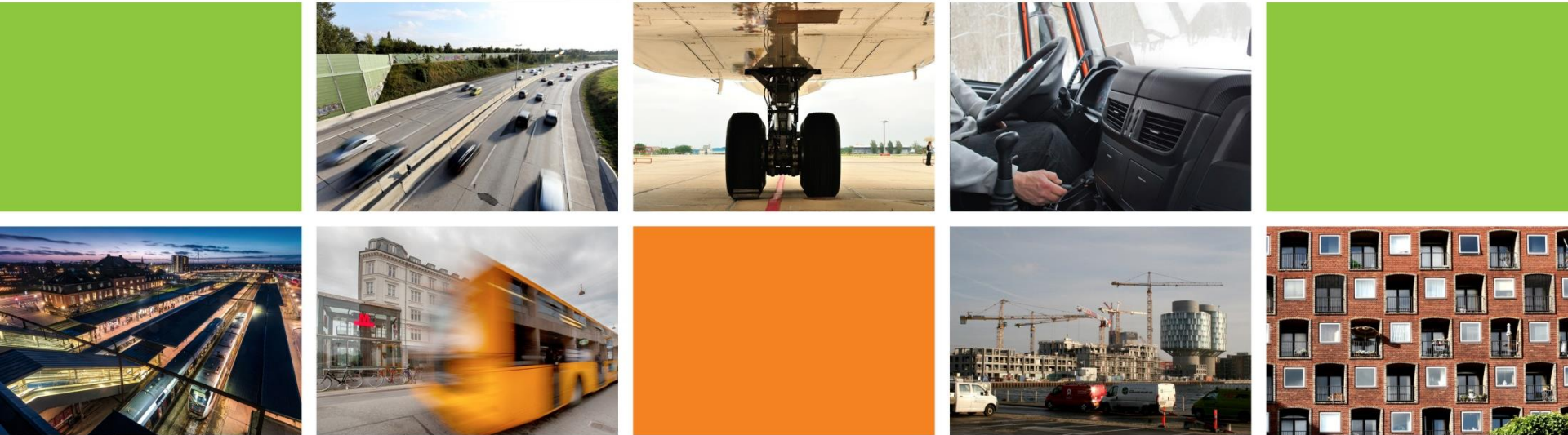


Lessons learned from a Danish railway accident



Danish Transport, Construction and Housing Agency
Mari Ruuhi, Senior Executive Advisor
7th ERA WORKSHOP in Budapest
2 October 2019

Agenda

- The accident – What happened?
- NSA DK measures
 - Warning
 - Prohibition & restrictions
 - Letter to EU
 - Improvement notice
 - Joint Network Secretariat (JNS)
- NSA DK preliminary findings

Accident in Denmark on 2 January 2019

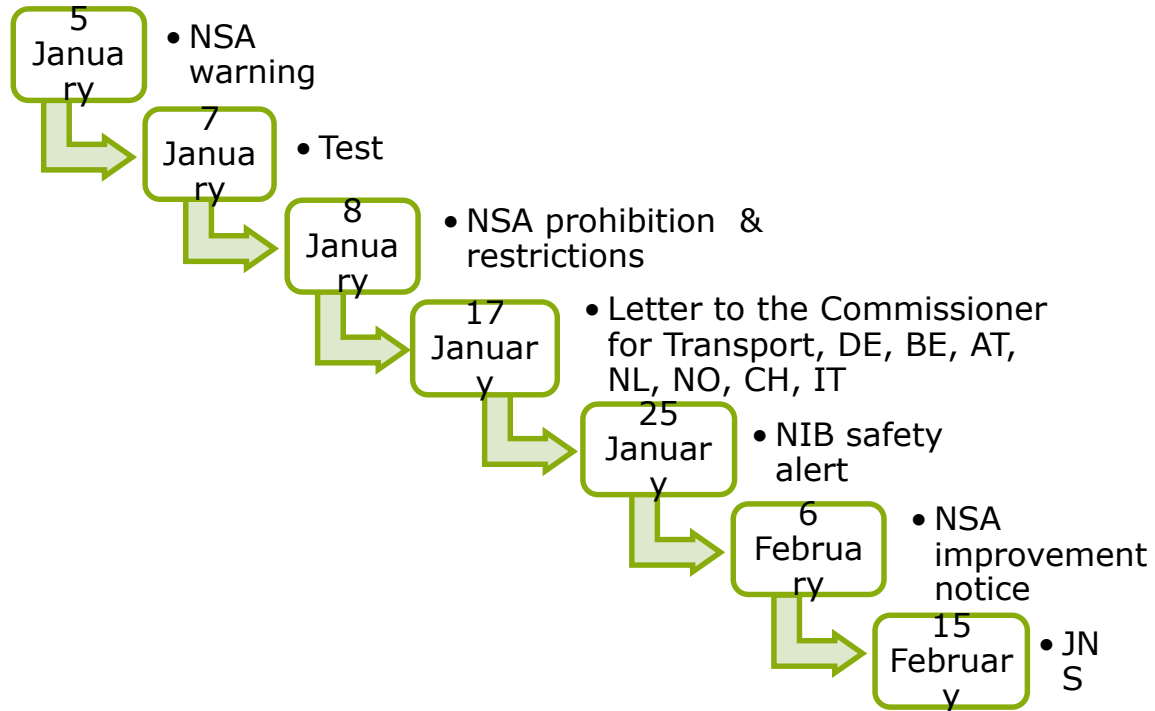


Accident in Denmark on 2 January 2019

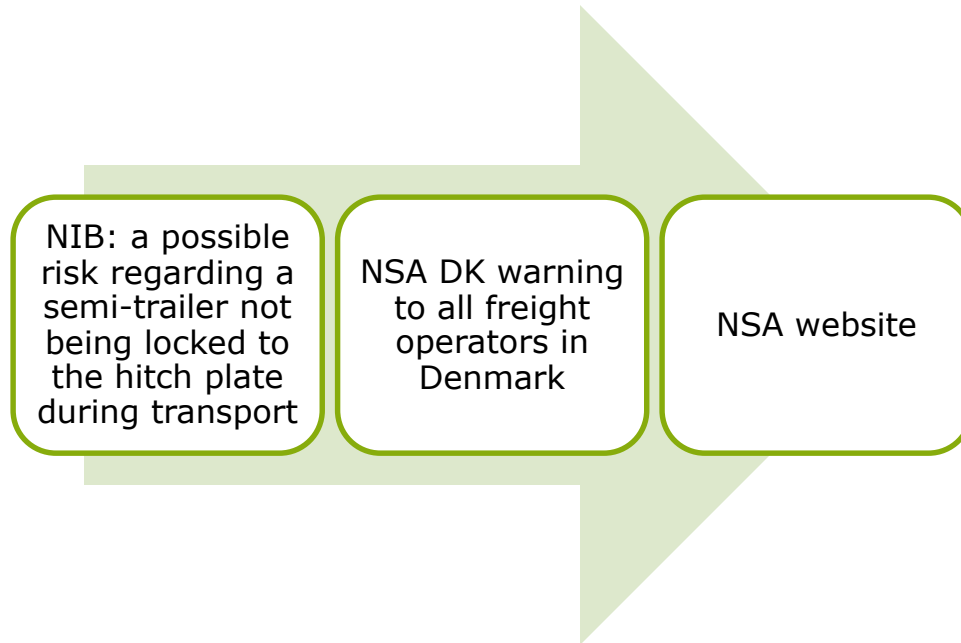


Pictures by Accident Investigation Board Denmark

NSA DK measures



NSA DK measures Warning, 5 January

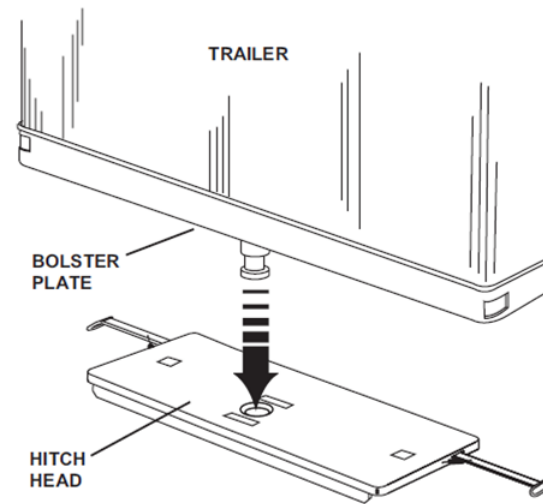


NSA DK measures Test, 7 January

After loading the semi-trailer on the freight wagon the trailer was lifted up to test whether the lock was properly locked.

This was successful only in 1 out of 3 cases

COUPLING PROCEDURES (Loading):



NSA DK measures Prohibition, 8 January

Prohibition – freight operators

- All transport involving semi-trailers loaded on pocket cars on the Great Belt Bridge
- Freight operators had to submit documentation for procedures for controlling a correct locking

Lifting the ban

- Description of and documentation for:
- *procedures for controlling a correct locking*
- *assessment of the sufficiency of procedures by an independent expert in the field*
- *the expert's qualifications*
- *how the control procedures are implemented in the SMS*

All 4 freight operators operating in Denmark satisfied the conditions between 11-23 January

NSA DK measures Restrictions, 8 January

Infrastructure manager on the Great Belt bridge shall ensure following :

- 15 m/sec and cross wind, the speed of freight transport, sensitive to wind, shall be reduced to 80 km/h.
- 20 m/sec and cross wind, freight transport sensitive to wind is not allowed.
- 25 m/sec all freight transport is prohibited.

NSA DK measures

Letter to EU, 17 January

Letter from the Danish minister of transport to:

- The Transport Commissioner, Ms Violetta Bulc
- Ministers of transport in the Scandinavian-Mediterranean Rail Freight Corridor and in other member states (Germany, Belgium, Austria, the Netherlands, Norway, Switzerland and Italy)
- Speedy establishment of a more efficient system for the exchange of information on accidents and incidents
- Common Occurrence Reporting (COR system)

NSA DK measures

Improvement notice, 6 February

25 January

NIB Safety Alert on suppliers instruction manual (type FW6170, hitch plate locking mechanism)

28 January

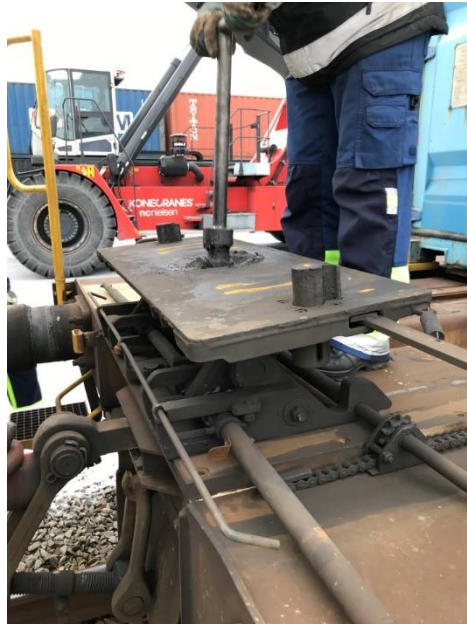
NSA DK request for freight operators' procedures for locking of hitch plate

6 February

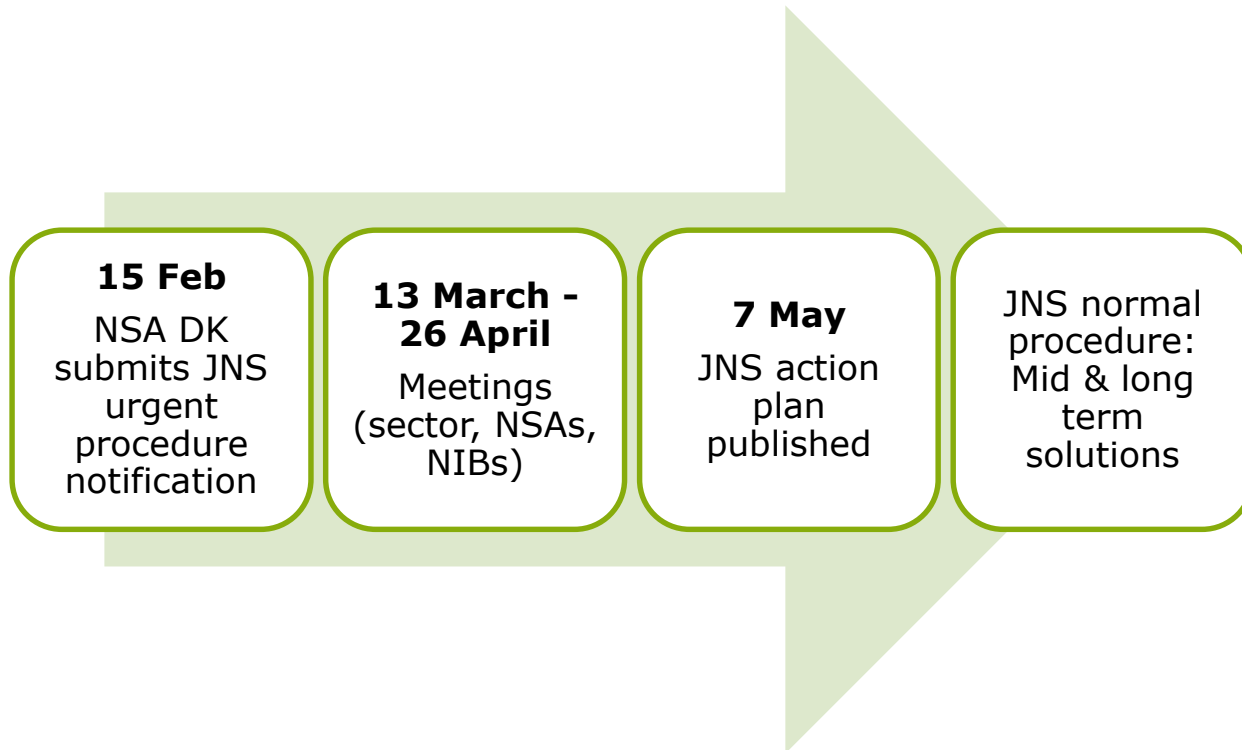
Use of kingpin dummy mandatory when loading semi-trailers on pocket wagons in Denmark

NSA DK measures Improvement notice, 6 February

King
pin
dummy



NSA DK measures
JNS Urgent procedure, 15 February – 26 April



Preliminary findings

- Sharing information is important!
- Efficient EU system for sharing information
 - SAIT
 - SIS
 - E-RAIL
- 15 November, Copenhagen: ERA - DK Workshop for the NSAs on Sharing Safety Information

Thank you for your attention

Questions?

mru@tbst.dk